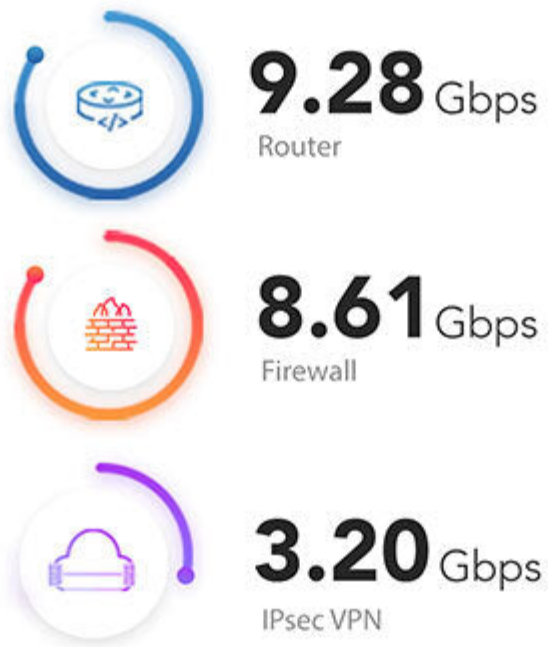

NETGATE 4200



FIREWALL. VPN. ROUTER.
MAX

The Netgate® 4200 with pfSense® Plus software is the most versatile security gateway in its class. The 4200 utilizes the blazing fast performance of 4-core Intel® Atom® C1110 CPU to achieve benchmark results up to three times faster in routing, firewall forwarding and IPsec VPN than the previous generation of security gateways. The 4200 delivers over 9.2 Gbps of L3 routing across four independent 2.5 GbE flexible WAN/LAN ports.

PERFORMANCE



Both IMIX and iPerf3 tests were used to measure throughput.

The Netgate 4200 is ideal for pro-home, small/medium businesses, branch and edge deployments that require flexible port configurations to support 1 to 2.5 Gbps WAN capabilities across four discrete, unswitched 2.5 Gbps RJ-45 ethernet LAN ports - all in a silent desktop form factor.

L3 Forwarding

(Router)

- IPERF3 Traffic: 8.75 Gbps
- IMIX Traffic: 9.28 Gbps

Firewall

(10k ACLs)

- IPERF3 Traffic: 8.61 Gbps
- IMIX Traffic: 3.21 Gbps

IPsec VPN

(AES-GCM-128 w/AES-NI)

- IPERF3 Traffic: 3.2 Gbps
- IMIX Traffic: 1.05 Gbps

Netgate 4200 performance tests conducted with pfSense Plus software version 23.09.1

SPECIFICATIONS



Quad Core 2.1 GHz
Intel Atom CPU



4 independent 2.5G
Flexible WAN/LAN Configurations



4GB LP DDR5

CPU: Intel Atom C1110 with AVX2, 4-core @ 2.1 GHz. Delivers up to 3x on benchmarking results for routing, firewall and IPsec VPN versus the Netgate 4100.

Network Ports: Four 2.5G independent and configurable RJ45 LAN ports for maximum flexibility. Configure it for single or dual WAN, or high-availability failover.

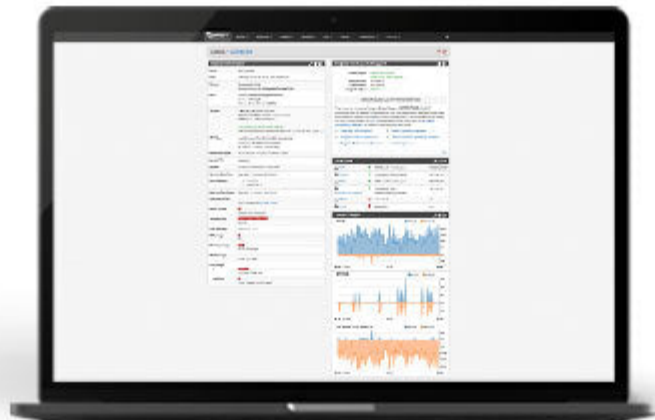
Storage: 128 GB NVMe M.2 SSD

Memory: 4 GB LPDDR5 RAM. DDR5 memory allows more stable, higher transfer rates for memory-intensive applications (e.g. IDS/IPS).

Cooling: The passive cooling system and low power draw of the Netgate 4200 provides efficient thermal management and silent operation expected from smaller devices despite its significantly higher performance.



Netgate's world-class firewall, VPN,
and router solution



1 MILLION+

business, government and educational institutions across
the world rely on pfSense Plus software for business-assured
edge and cloud secure networking

pfSense Plus software provides the performance, flexibility, reliability and business assurance expected from leading secure networking applications:

- Up to 10 Gbps performance
- Flexible 3rd-party application options
- Traditional management mechanisms
- Proven reliability
- Complete business assurance support

All at a fraction of the cost of proprietary alternatives, pfSense Plus software is the perfect answer. Popular pfSense Plus use cases include load balancing, traffic shaping, captive portal, UTM device, DNS/DHCP Server, IDS/IPS, failover WAN, and much more.

HARDWARE SPECIFICATIONS:

CPU	Intel Atom C1110 with AVX2, 4-core @ 2.1 GHz
CPU Cores	4-Core
Physical Network I/O ports	(4) 2.5 Gbps RJ-45 "direct" (unswitched) ethernet LAN ports
Storage	128 GB NVMe M.2 SSD

Memory	4 GB LPDDR5
Physical Expansion Card Slots	1x M.2 (B-key slot) USB 1x M.2 (B-key slot) x1 PCIe 3.0, USB 1x M.2 (M-key slot) x4 PCIe 4.0
Console Port	1x auto-detect console port: "Cisco pinout" RJ45 + micro-USB (micro-USB cable included with each system)
USB Ports	1x USB 3.0 jacks (USB-A female) Located on right side rear when viewed from system front
LED	3x 3-color LEDs (RGB) Software / bootloader controllable via GPIO
Enclosure	Desktop - Aluminum, plastic, and steel enclosure. 8.66 x 7.1 x 2.3 inches 220 x 180 x 60 mm
Mounting	Optional wall mount kit
Cooling	Passive - integrated aluminum chassis and heatsink
Power	External ITE P/S AC/DC 100-240V, 50-60 Hz, 12V 5.0A (60W), threaded (locking) barrel connector - AC Inlet: IEC320-C7 (2 PIN) - - Power Cord: One US, UK, EU or ANZ power cord included. - US Power Cord: NEMA 1-15-P to IEC320-C7 - UK Power Cord: BS 1363 to IEC320-C7 - EU Power Cord: CEE7/16 to IEC320-C7 - ANZ Power Cord: AS 3112 (ungrounded) to IEC320-C7
Environmental	0°C (32°F) to 40°C (104°F) - ambient
Certifications	CE, CB, FCC (Class B), RoHS, CCATS, UL, RCM, UKCA

KEY FEATURES

LOW TOTAL COST OF OWNERSHIP

- **No additional software update cost for the life of the product.**
- No artificial limits or add-ons required to make your system fully functional.
- No additional usage or feature-based pricing. Enjoy unlimited users, unlimited firewall rules, unlimited IPsec tunnels, dual WAN, etc.
- Low power requirements to help save you money.
- This system is designed for a long deployment lifetime.

GROWS WITH YOU

- Get all the security features you need to protect your home or business.

- Flexible configuration and support for multi-WAN, high availability, VPN, load balancing, reporting and monitoring, etc.
- Add optional packages such as [Snort](#) or [Suricata](#) for IDS/IPS and network security monitoring.
- Maximum Active Connections: 4,000,000

EASY GUI MANAGEMENT

- Manage pfSense Plus software settings through our web-based GUI.
- No fumbling with a command-line interface or typing arcane commands.

SECURE REMOTE ACCESS

- Connect via encrypted Virtual Private Networks (VPN) between your offices, let mobile workers connect securely, or connect to the Cloud!
- Use the built-in Amazon VPC Wizard to easily establish VPN connections with your Amazon EC2 cloud.

Best For:

- Prosumers
- Remote Workers
- Small to Medium-Sized Business Networks
- Small to Medium-Sized Branch Office
- Managed Service Provider / Managed Security Service Provider (MSP/MSSP) On-Premises Appliance
- Edge-to-Cloud
- Everyone looking for great performance with no fan noise
- Situations where a rack mount system is not an option
- Anyone with High-Speed Gigabit Connections
- Many VPN Connections

Software Features

Router:

- Policy-based routing
- Multiple IP addresses per interface
- Multiple WAN connections (with load balancing and failover)
- Complex NAT mapping (outbound and inbound)
- Concurrent IPv4 and IPv6 support
- Optional multi-node High Availability (HA) clustering
- Dynamic routing protocol support [w/pkg]

Firewall, Attack Prevention, & Content Filtering:

- Extensive firewall rules
- Stateful filtering & packet inspection
- Per-interface configuration

- Ethernet (layer 2) rule-based packet filtering
- IP/DNS-based filtering and blacklisting [w/pkg]
- IDS/IPS with Snort-based packet analyzer [w/pkg]
- Layer 7 application detection and blocking [w/pkg]
- Reverse proxy [w/pkg]
- Geo/country blocking, IP block lists [w/pkg]

VPN:

- Site-to-site and remote access VPNs
- IPsec, OpenVPN, WireGuard®
- Split tunneling
- IPsec policy-based and route-based protocol support
- OpenVPN Data Channel Offload (DCO)
- Intel IPsec Multi-Buffer (IIMB) where available

User Authentication & System Security:

- User and group-based privileges
- LDAP authentication
- Automatic lockout after repeated attempts
- Optional key-based SSH access
- Traffic and bandwidth shaping
- Captive portal with user data transfer quotas
- External RADIUS authentication [w/pkg]

Configuration:

- Setup wizard for initial configuration
- Encrypted automatic backup to Netgate server
- Easy configuration backup/restore
- Multi-language support

Monitoring & Reporting:

- Customizable dashboard with widgets
- Local monitoring graphs
- Remote logging
- Network usage monitoring [w/pkg]
- Network diagnostics [w/pkg]